

BOX SCORE: *** FINAL ***

Date: 03-17-88 Site: State Journey, Louisville Attendance: 17,670

Team: Clay County

| NO. | NAME | TOTAL FG | | 3-POINT | | FT | FTA | REB | | | PF | TP | A | TO | BLK | S | MIN |
|--------------|----------------|-----------|-----|---------|-------|-------|-------|--------|----|--------|--------|---------------------|----|----|-----|---|-----|
| | | FG | FGA | FG | FGA | | | O | D | T | | | | | | | |
| 20 | Jackson, Kevin | 5 | 6 | 0 | 0 | 3 | 4 | 3 | 1 | 4 | 1 | 13 | 1 | 0 | 0 | 0 | 29 |
| 22 | Farmer, Russ | 4 | 9 | 3 | 6 | 0 | 0 | 2 | 6 | 8 | 3 | 11 | 5 | 3 | 0 | 0 | 28 |
| 54 | Rawlings, E. | 1 | 1 | 0 | 0 | 0 | 0 | 1 | 2 | 3 | 3 | 2 | 0 | 0 | 0 | 0 | 23 |
| 10 | Chadwell, Russ | 8 | 12 | 0 | 0 | 1 | 2 | 3 | 2 | 5 | 3 | 17 | 2 | 2 | 2 | 4 | 27 |
| 32 | Farmer, Richie | 14 | 24 | 4 | 6 | 6 | 6 | 1 | 4 | 5 | 1 | 38 | 4 | 2 | 0 | 1 | 30 |
| 50 | Gray, Terry | 0 | 0 | 0 | 0 | 0 | 0 | 0 | 1 | 1 | 2 | 0 | 0 | 0 | 3 | 0 | 9 |
| 30 | Gilbert, A. | 0 | 0 | 0 | 0 | 0 | 0 | 0 | 1 | 1 | 0 | 0 | 1 | 2 | 0 | 0 | 6 |
| 42 | Blair, David | 0 | 0 | 0 | 0 | 0 | 0 | 0 | 0 | 0 | 0 | 0 | 0 | 0 | 0 | 0 | 2 |
| 12 | Nicholson, R. | 0 | 0 | 0 | 0 | 0 | 0 | 0 | 0 | 0 | 0 | 0 | 0 | 0 | 0 | 0 | 3 |
| 24 | Collins, Lloyd | 0 | 0 | 0 | 0 | 0 | 0 | 0 | 0 | 0 | 0 | 0 | 0 | 0 | 0 | 0 | 2 |
| 40 | Sasser, Todd | 1 | 1 | 0 | 0 | 0 | 0 | 0 | 0 | 0 | 0 | 2 | 0 | 0 | 0 | 1 | 1 |
| 14 | Garrison, Wes | 0 | 0 | 0 | 0 | 0 | 0 | 0 | 1 | 1 | 0 | 0 | 0 | 0 | 0 | 0 | 0 |
| TEAM | | | | | | | | 2 | 2 | | | | | | | | |
| TOTALS | | 33 | 53 | 7 | 12 | 10 | 12 | 10 | 20 | 30 | 13 | 83 | 13 | 9 | 5 | 6 | 160 |
| Percentages: | | Game----- | FG | 33/ 53 | 62.3% | 3-PT. | 7/ 12 | 58.3% | FT | 10/ 12 | 83.3% | 0 Deadball Rebounds | | | | | |
| | | Period 1 | | 10/ 17 | 58.8% | | 2/ 6 | 33.3% | | 2/ 2 | 100.0% | | | | | | |
| | | Period 2 | | 9/ 12 | 75.0% | | 3/ 3 | 100.0% | | 1/ 2 | 50.0% | | | | | | |
| | | Period 3 | | 9/ 15 | 60.0% | | 0/ 1 | 0.0% | | 1/ 2 | 50.0% | | | | | | |
| | | Period 4 | | 5/ 9 | 55.6% | | 2/ 2 | 100.0% | | 6/ 6 | 100.0% | | | | | | |

Team: Rowan County

| NO. | NAME | TOTAL FG | | 3-POINT | | FT | FTA | REB | | | PF | TP | A | TO | BLK | S | MIN |
|--------------|----------------|-----------|-----|---------|-------|-------|------|------|----|-------|--------|---------------------|---|----|-----|---|-----|
| | | FG | FGA | FG | FGA | | | O | D | T | | | | | | | |
| 21 | Wells, Kelly | 6 | 19 | 0 | 3 | 0 | 0 | 3 | 1 | 4 | 4 | 12 | 0 | 3 | 1 | 0 | 27 |
| 42 | Adkins, Greg | 7 | 12 | 0 | 0 | 2 | 4 | 3 | 8 | 11 | 3 | 16 | 0 | 3 | 1 | 1 | 26 |
| 44 | Price, Mike | 5 | 8 | 0 | 0 | 0 | 0 | 2 | 0 | 2 | 3 | 10 | 0 | 1 | 0 | 1 | 29 |
| 22 | Blair, Jason | 1 | 2 | 0 | 1 | 0 | 0 | 1 | 2 | 3 | 1 | 2 | 3 | 3 | 0 | 0 | 31 |
| 32 | Morgan, Jeremy | 3 | 7 | 0 | 0 | 1 | 2 | 2 | 0 | 2 | 0 | 7 | 1 | 1 | 0 | 0 | 22 |
| 20 | Moore, Ron | 0 | 3 | 0 | 0 | 2 | 2 | 1 | 0 | 1 | 1 | 2 | 2 | 2 | 0 | 1 | 9 |
| 55 | Trent, T. J. | 0 | 3 | 0 | 0 | 3 | 4 | 2 | 1 | 3 | 0 | 3 | 0 | 1 | 0 | 0 | 8 |
| 04 | Drager, Kip | 0 | 0 | 0 | 0 | 0 | 0 | 0 | 0 | 0 | 0 | 0 | 0 | 1 | 0 | 0 | 2 |
| 34 | McIntosh, Jon | 0 | 2 | 0 | 2 | 0 | 0 | 0 | 0 | 0 | 0 | 0 | 0 | 0 | 0 | 0 | 2 |
| 52 | Skaggs, Coby | 0 | 0 | 0 | 0 | 0 | 0 | 0 | 0 | 0 | 0 | 0 | 0 | 0 | 0 | 0 | 2 |
| 24 | Smith, Buddy | 0 | 0 | 0 | 0 | 0 | 0 | 0 | 0 | 0 | 0 | 0 | 0 | 0 | 0 | 0 | 1 |
| 12 | Hart, Brad | 0 | 0 | 0 | 0 | 0 | 0 | 0 | 0 | 0 | 0 | 0 | 0 | 0 | 0 | 0 | 1 |
| TEAM | | | | | | | | 1 | 2 | 3 | | | | | | | |
| TOTALS | | 22 | 56 | 0 | 6 | 8 | 12 | 15 | 14 | 29 | 12 | 52 | 6 | 15 | 2 | 3 | 160 |
| Percentages: | | Game----- | FG | 22/ 56 | 39.3% | 3-PT. | 0/ 6 | 0.0% | FT | 8/ 12 | 66.7% | 1 Deadball Rebounds | | | | | |
| | | Period 1 | | 7/ 16 | 43.8% | | 0/ 0 | 0.0% | | 3/ 4 | 75.0% | | | | | | |
| | | Period 2 | | 5/ 12 | 41.7% | | 0/ 1 | 0.0% | | 2/ 2 | 100.0% | | | | | | |
| | | Period 3 | | 7/ 15 | 46.7% | | 0/ 2 | 0.0% | | 3/ 6 | 50.0% | | | | | | |
| | | Period 4 | | 3/ 13 | 23.1% | | 0/ 3 | 0.0% | | 0/ 0 | 0.0% | | | | | | |

OFFICIALS: Ronald Monks, Burrey Jenkins
 Technicals: None

| SCORE BY PERIODS | | | | | | |
|------------------|----|----|----|----|---|----|
| Clay County | 24 | 22 | 19 | 18 | = | 83 |
| Rowan County | 17 | 12 | 17 | 6 | = | 52 |

Clay County "Tigers" vs Rowan County "Vikings"
2nd Half Play by Play

PAGE : 2

Tip off at 1:00 p.m. on 03/17/88 at State Tourney, Louisville
Produced by the K.H.S.A.A. Stat Crew with FINAL III™

| Player | Team | Rowan County | Time | Score | Clay County | Player | Team |
|--------------|--------------|--|--------------------|-----------------|--|--------|-------------------|
| Wells, Kelly | Adkins, Greg | Price, Mike, Blair, Jason, Morgan, Jeremy Ball to Vikings | | | Jackson, Kevin, Farmer, Russ, Rawlings, E., Chadwell, Russ, Farmer, Richie | | |
| 7-11 | 63.6% | 20-46 43.4% | 4 7:42 | | | | |
| 1 | | 4 | 4 7:31 | *48-65 | | | |
| | | Sub In: Moore, Ron Out: Morgan, Jeremy | 4 6:57 | | | | |
| | | 2 ft Lane Follow by Adkins, Greg | 4 6:57 | | | | |
| | | Foul on Moore, Ron | 4 6:57 | 48-68* | 3 pt 21 ft Left Angle Jump shot by Farmer, Russ | 3-8 | 37.5% 29-47 61.7% |
| 3-6 | 50.0% | 21-47 44.6% | 4 6:54 | *50-68 | | | |
| | | 16 ft Right Base Line Jump shot by Morgan, Jeremy | 4 6:44 | | Player Control Foul on Chadwell, Russ | 3 | 8 |
| | | Sub In: Trent, T. J. Out: Wells, Kelly | 4 6:24 | | | | |
| | | | 4 5:50 | 50-71* | 3 pt 21 ft Right Side Jump shot by Farmer, Russ | 4-9 | 44.4% 30-49 61.2% |
| | | | | | Assist by Farmer, Richie | 3 | 11 |
| | | | 4 5:26 | 50-73* | Layup Off Fast Break by Jackson, Kevin | 4-5 | 80.0% 31-50 62.0% |
| | | | | | Assist by Farmer, Richie | 4 | 12 |
| | | REB: 28 A: 5 BLK: 2 TO: 13 PF: 4 | 4 5:19 | | REB: 24 A: 12 BLK: 5 TO: 7 PF: 8 | | |
| | | S: 3 FT: 9-12 66.6% FG: 21-48 43.7% | No. 1 Rowan County | T I M E - O U T | S: 4 FT: 4-6 66.6% FG: 31-50 62.0% | | |
| | | Sub In: Wells, Kelly Out: Adkins, Greg | 4 5:19 | | | | |
| 3 | | Foul on Price, Mike | 4 4:45 | | | | |
| | | | 4 4:45 | 50-75* | Sub In: Gilbert, A. Out: Chadwell, Russ. | | |
| 6-19 | 31.5% | 22-50 44.0% | 4 4:45 | *52-75 | Farmer, Richie, 2 Free Throws made both | 2-2 | 100% 6-8 75.0% |
| 3 | | 6 | 4 4:23 | | | | |
| | | 10 ft Lane Turnaround by Wells, Kelly | | | | | |
| | | Assist by Blair, Jason | 4 4:10 | 52-77* | 10 ft Right Side Bank by Jackson, Kevin | 5-6 | 83.3% 32-51 62.7% |
| | | | | | Assist by Gilbert, A. | 1 | 13 |
| 3 | | Foul on Wells, Kelly | 4 2:46 | | | | |
| | | Sub In: Adkins, Greg Out: Trent, T. J. | 4 2:46 | | Sub In: Gray, Terry Out: Rawlings, E. | | |
| | | Sub In: Crager, Kip Out: Morgan, Jeremy | 4 2:46 | | | | |
| | | | 4 2:46 | | Sub In: Blair, David Out: Jackson, Kevin | | |
| | | | 4 2:46 | 52-79* | Farmer, Richie, 1 & Bonus made both | 4-4 | 100% 8-10 80.0% |
| 4 | | 7 | 4 2:19 | | | | |
| | | Foul on Wells, Kelly | 4 2:19 | | Sub In: Nicholson, R. Out: Farmer, Russ | | |
| | | Sub In: McIntosh, Jon Out: Wells, Kelly | 4 2:19 | 52-81* | Farmer, Richie, 1 & Bonus made both | 6-6 | 100% 10-12 83.3% |
| | | | 4 1:30 | | Sub In: Collins, Lloyd Out: Farmer, Richie | | |
| | | Sub In: Moore, Ron Out: Blair, Jason | 4 1:21 | | | | |
| | | Sub In: Skaggs, Coby Out: Price, Mike | 4 1:16 | | Sub In: Sasser, Todd Out: Gray, Terry | | |
| | | Sub In: Trent, T. J. Out: Adkins, Greg | 4 1:16 | | | | |
| | | | 4 1:05 | | | | |
| | | Sub In: Smith, Buddy Out: Trent, T. J. | 4 0:44 | | Sub In: Garrison, Wes Out: Gilbert, A. | | |
| | | Sub In: Hart, Brad Out: Moore, Ron | 4 0:44 | | | | |
| | | | 4 0:34 | 52-83* | 12 ft Left Base Line Jump shot by Sasser, Todd | 1-1 | 100% 33-53 62.2% |
| | | | 4 0:12 | | | | |

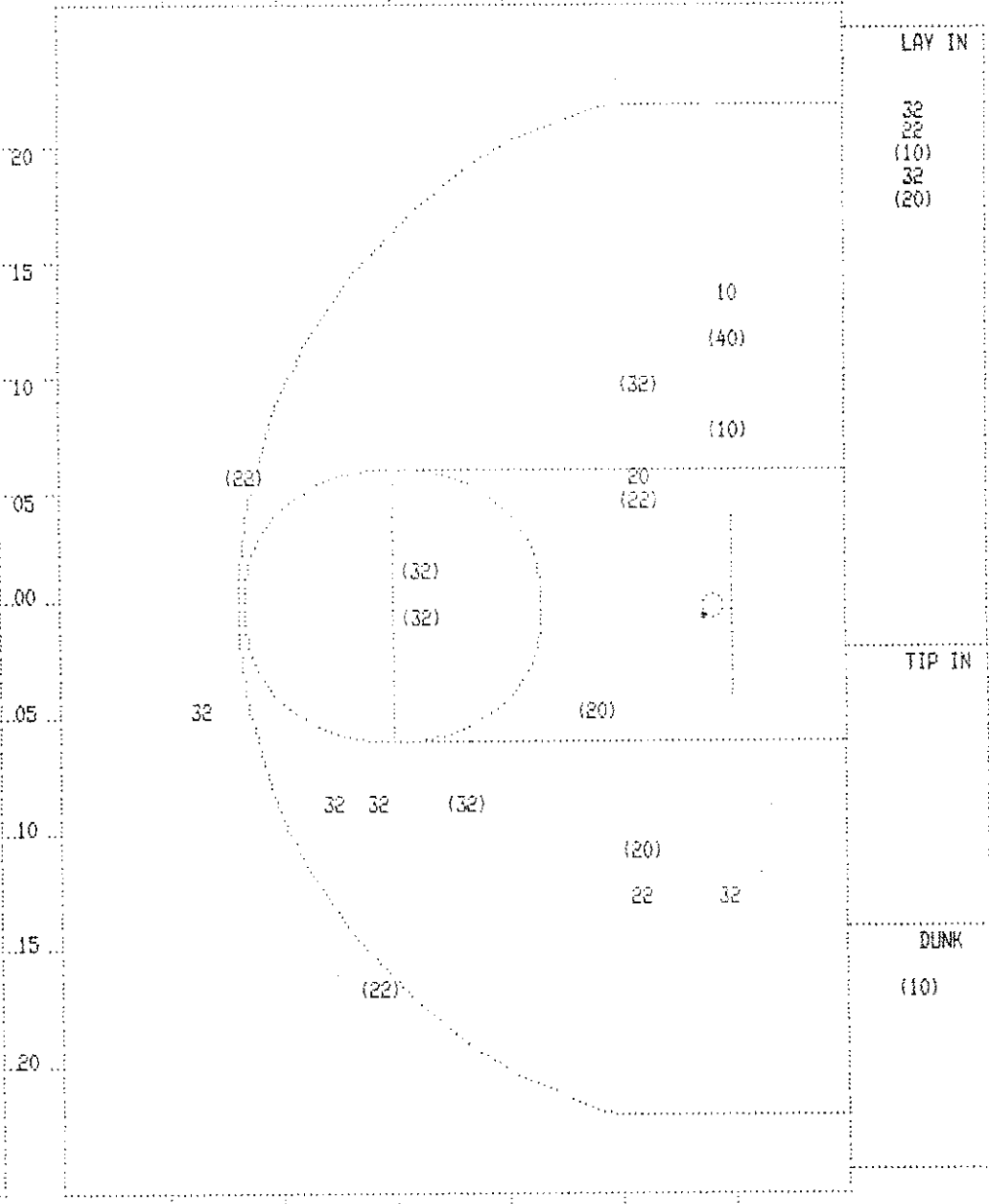
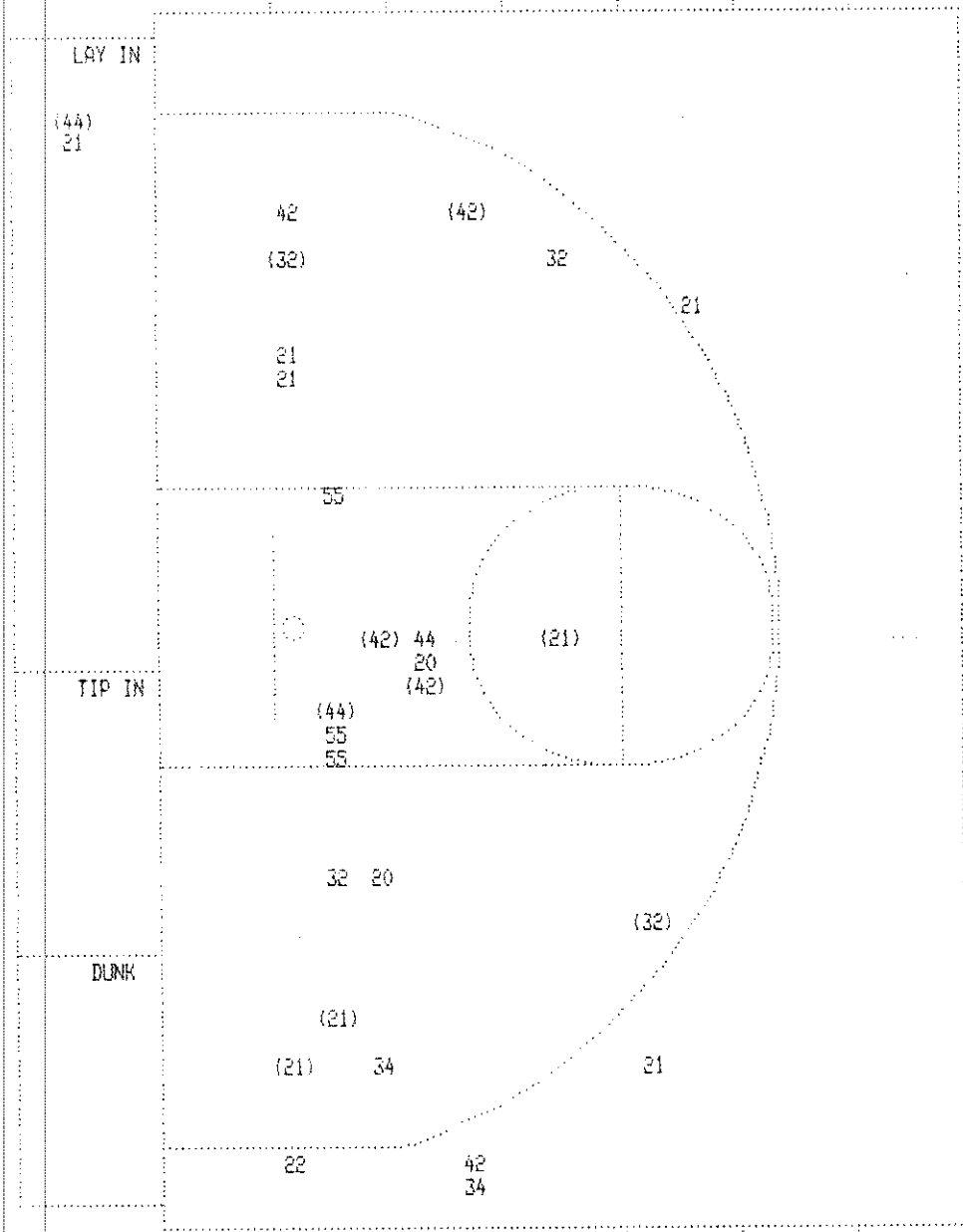
Clay County "Tigers" vs Rowan County "Vikings"
2nd Half Play by Play

PAGE : 1

Tip off at 1:00 p.m. on 03/17/88 at State Tourney, Louisville
Produced by the K.H.S.A.A. Stat Crew with FINAL III™

| Player | Team | Rowan County | Time | Score | Clay County | Player | Team |
|---|-------|--------------|---|--------|--|---|------------------------------------|
| Wells, Kelly, Adkins, Greg, Price, Mike, Blair, Jason, Morgan, Jeremy | | | | | Jackson, Kevin, Farmer, Russ, Rawlings, E., Chadwell, Russ, Farmer, Richie | | |
| 5-8 | 62.5% | 13-29 44.8% | 19 ft Right Side Jump shot by Adkins, Greg | 3 7:35 | *31-46 | Ball to Tigers | |
| 2 | | 5 | Assist by Blair, Jason | 3 7:23 | | 3 | 1 |
| 2-4 | 50.0% | 14-30 46.6% | 18 ft Left Angle Jump shot by Morgan, Jeremy | 3 7:23 | | Foul on Rawlings, E. | |
| 4-12 | 33.3% | 15-31 48.3% | 18 ft Left Base Line Jump shot by Wells, Kelly | 3 7:23 | *33-46 | Sub In: Gray, Terry Out: Rawlings, E. | |
| 5-13 | 38.4% | 16-32 50.0% | 16 ft Left Base Line Jump shot by Wells, Kelly | 3 6:56 | 33-48* | 6-9 | 66.6% 20-32 62.5 |
| | | | | 3 6:42 | *35-48 | Reverse Lay Up Off Fast Break by Chadwell, Russ | |
| | | | | 3 6:13 | 35-50* | 2-6 | 33.3% 21-34 61.7 |
| | | | | 3 6:03 | *37-50 | 6 ft Left Side Jump shot by Farmer, Russ | |
| | | | | 3 5:59 | | REB: 19 A: 5 BLK: 2 TO: 9 PF: 0 | |
| | | | | S: 3 | FT: 5-6 83.3% | FG: 16-32 50.0% | TIME - OUT |
| | | | | | | Clay County No. 1 | S: 2 FT: 3-4 75.0% FG: 21-34 61.7% |
| 6-9 | 66.6% | 17-33 51.5% | 4 ft Lane Jump shot by Adkins, Greg | 3 5:54 | *39-50 | | |
| 4-6 | 66.6% | 18-34 52.9% | Driving Layup by Price, Mike | 3 5:39 | *41-50 | | |
| | | | Sub In: Trent, T. J. Out: Adkins, Greg | 3 5:30 | | | |
| | | | | 3 5:25 | | 2 | 2 |
| | | | | 3 4:56 | | 1 | 3 |
| | | | | 3 4:56 | | 3 | 4 |
| 2 | | 1 | Foul on Price, Mike | 3 4:48 | | | |
| | | | | 3 4:08 | 41-52* | 11-17 | 64.7% 22-37 59.4 |
| | | | | 3 3:50 | | 2 | 5 |
| 3-4 | 75.0% | 6-8 75.0% | Trent, T. J., 2 Free Throws made 1st missed 2nd | 3 3:50 | *42-52 | | |
| | | | Sub In: Adkins, Greg Out: Trent, T. J. | 3 3:45 | | | |
| | | | | 3 3:45 | 42-54* | 3-4 | 75.0% 23-38 60.5 |
| | | | | 3 3:24 | 42-56* | 7-10 | 70.0% 24-39 61.5 |
| | | | | | | 5 | 10 |
| | | | | | | 1 | 6 |
| 0-2 | 00.0% | 6-10 60.0% | Adkins, Greg, 2 Free Throws missed both | 3 3:01 | | | |
| 2 | | 2 | Foul on Adkins, Greg | 3 2:45 | | | |
| | | | | 3 2:45 | | | |
| | | | Sub In: Moore, Ron Out: Morgan, Jeremy | 3 2:45 | | | |
| 5-7 | 71.4% | 19-42 45.2% | 4 ft Lane Follow by Price, Mike | 3 2:45 | 42-57* | 1-2 | 50.0% 4-6 66.6 |
| | | | | 3 2:09 | *44-57 | | |
| | | | | 3 1:41 | 44-59* | 12-19 | 63.1% 25-41 60.9 |
| | | | | 3 1:10 | 44-61* | 13-20 | 65.0% 26-42 61.9 |
| | | | | 3 1:01 | | 2 | 7 |
| | | | | 3 1:01 | | Foul on Chadwell, Russ | |
| | | | | | | Sub In: Farmer, Russ Out: Gilbert, A. | |
| 2-4 | 50.0% | 8-12 66.6% | Adkins, Greg, 1 & Bonus made both | 3 1:01 | *46-61 | | |
| | | | | 3 0:50 | 46-63* | 8-11 | 72.7% 27-43 62.7 |
| 3 | | 3 | Foul on Adkins, Greg | 3 0:32 | | | |
| | | | | 3 0:32 | | Sub In: Rawlings, E. Out: Gray, Terry | |
| | | | | 3 0:32 | 46-65* | 14-21 | 66.6% 28-44 63.6 |
| | | | | | | 13 ft Right Angle Jump shot by Farmer, Richie | |

SECOND HALF SHOT CHART Produced by the K.H.S.A.A. Stat Crew with FINAL III™



| Rowan County | | | | | |
|-----------------|--------|----------|-----------------|------------|---------|
| Player | | | Player | | |
| 21 - Wells, Kel | 3 / 8 | 37.5% | 20 - Moore, Ron | 0 / 2 | 0.0% |
| 42 - Adkins, Gr | 3 / 5 | 60.0% | 34 - McIntosh, | 0 / 2 | 0.0% |
| 44 - Price, Mik | 2 / 3 | 66.6% | 55 - Trent, T. | 0 / 3 | 0.0% |
| 22 - Blair, Jas | 0 / 1 | 0.0% | | | |
| 32 - Morgan, Je | 2 / 4 | 50.0% | | | |
| Layups | 1-9 Ft | 10-15 Ft | Over 15 Ft | 3 Pointers | Total |
| 1 / 2 | 3 / 8 | 1 / 5 | 5 / 8 | 0 / 5 | 10 / 28 |
| 50.0% | 37.5% | 20.0% | 62.5% | 0.0% | 35.7% |

| Clay County | | | | | |
|-----------------|--------|----------|------------|------------|---------|
| Player | | | Player | | |
| 20 - Jackson, K | 3 / 4 | 75.0% | | | |
| 22 - Farmer, Ru | 3 / 5 | 60.0% | | | |
| 10 - Chadwell, | 3 / 4 | 75.0% | | | |
| 32 - Farmer, Ri | 4 / 10 | 40.0% | | | |
| 40 - Sasser, To | 1 / 1 | 100.0% | | | |
| Layups | 1-9 Ft | 10-15 Ft | Over 15 Ft | 3 Pointers | Total |
| 3 / 6 | 3 / 4 | 6 / 9 | 0 / 2 | 2 / 3 | 14 / 24 |
| 50.0% | 75.0% | 66.7% | 0.0% | 66.7% | 58.3% |

BOX SCORE: * OFFICIAL FIRST HALF * Date: 03-17-88 Site: State Tourney, Louisville Attendance: 15,000

Team: Clay County

| NO. | NAME | TOTAL FG | | 3-POINT | | FT | FTA | REB | | | PF | TP | A | TD | BLK | S | MIN |
|--------------|----------------|-----------|-----|---------|-----|--------|-------|-------|---|------|--------|----|---|------|--------|---|-----|
| | | FG | FGA | FG | FGA | | | O | D | T | | | | | | | |
| 20 | Jackson, Kevin | 2 | 2 | 0 | 0 | 3 | 4 | 1 | 1 | 2 | 1 | 7 | 1 | 0 | 0 | 0 | 16 |
| 22 | Farmer, Russ | 1 | 4 | 1 | 4 | 0 | 0 | 0 | 4 | 4 | 1 | 3 | 4 | 1 | 0 | 0 | 16 |
| 54 | Rawlings, E. | 1 | 1 | 0 | 0 | 0 | 0 | 0 | 0 | 0 | 2 | 2 | 0 | 0 | 0 | 0 | 16 |
| 10 | Chadwell, Russ | 5 | 8 | 0 | 0 | 0 | 0 | 2 | 1 | 3 | 0 | 10 | 2 | 1 | 0 | 2 | 16 |
| 32 | Farmer, Richie | 10 | 14 | 4 | 5 | 0 | 0 | 1 | 2 | 3 | 1 | 24 | 2 | 1 | 0 | 0 | 16 |
| TEAM | | | | | | | | 1 | 1 | 1 | | | | | | | |
| TOTALS | | 19 | 29 | 5 | 9 | 3 | 4 | 4 | 9 | 13 | 5 | 46 | 9 | 3 | 0 | 2 | 80 |
| Percentages: | | HALF----- | | FG | | 19/ 29 | 65.5% | 3-PT. | | 5/ 9 | 55.6% | FT | | 3/ 4 | 75.0% | | |
| | | Period 1 | | | | 10/ 17 | 58.8% | | | 2/ 6 | 33.3% | | | 2/ 2 | 100.0% | | |
| | | Period 2 | | | | 9/ 12 | 75.0% | | | 3/ 3 | 100.0% | | | 1/ 2 | 50.0% | | |

Team: Rowan County

| NO. | NAME | TOTAL FG | | 3-POINT | | FT | FTA | REB | | | PF | TP | A | TD | BLK | S | MIN |
|--------------|----------------|-----------|-----|---------|-----|--------|-------|-------|---|------|------|----|---|------|--------|---|-----|
| | | FG | FGA | FG | FGA | | | O | D | T | | | | | | | |
| 21 | Wells, Kelly | 3 | 11 | 0 | 1 | 0 | 0 | 2 | 0 | 2 | 2 | 6 | 0 | 3 | 1 | 0 | 14 |
| 42 | Adkins, Greg | 4 | 7 | 0 | 0 | 0 | 0 | 2 | 4 | 6 | 1 | 8 | 0 | 1 | 1 | 1 | 16 |
| 44 | Price, Mike | 3 | 5 | 0 | 0 | 0 | 0 | 0 | 0 | 0 | 1 | 6 | 0 | 1 | 0 | 0 | 15 |
| 22 | Blair, Jason | 1 | 1 | 0 | 0 | 0 | 0 | 1 | 2 | 3 | 1 | 2 | 1 | 1 | 0 | 0 | 16 |
| 32 | Morgan, Jeremy | 1 | 3 | 0 | 0 | 1 | 2 | 2 | 0 | 2 | 0 | 3 | 1 | 1 | 0 | 0 | 12 |
| 20 | Moore, Ron | 0 | 1 | 0 | 0 | 2 | 2 | 1 | 0 | 1 | 0 | 2 | 2 | 1 | 0 | 1 | 5 |
| 55 | Trent, T. J. | 0 | 0 | 0 | 0 | 2 | 2 | 0 | 0 | 0 | 0 | 2 | 0 | 0 | 0 | 0 | 2 |
| TEAM | | | | | | | | 1 | 1 | 1 | | | | | | | |
| TOTALS | | 12 | 28 | 0 | 1 | 5 | 6 | 8 | 7 | 15 | 5 | 29 | 4 | 8 | 2 | 2 | 80 |
| Percentages: | | HALF----- | | FG | | 12/ 28 | 42.9% | 3-PT. | | 0/ 1 | 0.0% | FT | | 5/ 6 | 83.3% | | |
| | | Period 1 | | | | 7/ 16 | 43.8% | | | 0/ 0 | 0.0% | | | 3/ 4 | 75.0% | | |
| | | Period 2 | | | | 5/ 12 | 41.7% | | | 0/ 1 | 0.0% | | | 2/ 2 | 100.0% | | |

OFFICIALS: Ronald Monks, Burney Jenkins
 Technicals: None

| SCORE BY PERIODS | | | |
|------------------|----|----|------|
| Clay County | 24 | 22 | = 46 |
| Rowan County | 17 | 12 | = 29 |

Produced by the K.H.S.A.A. Stat Crew with FINAL III™

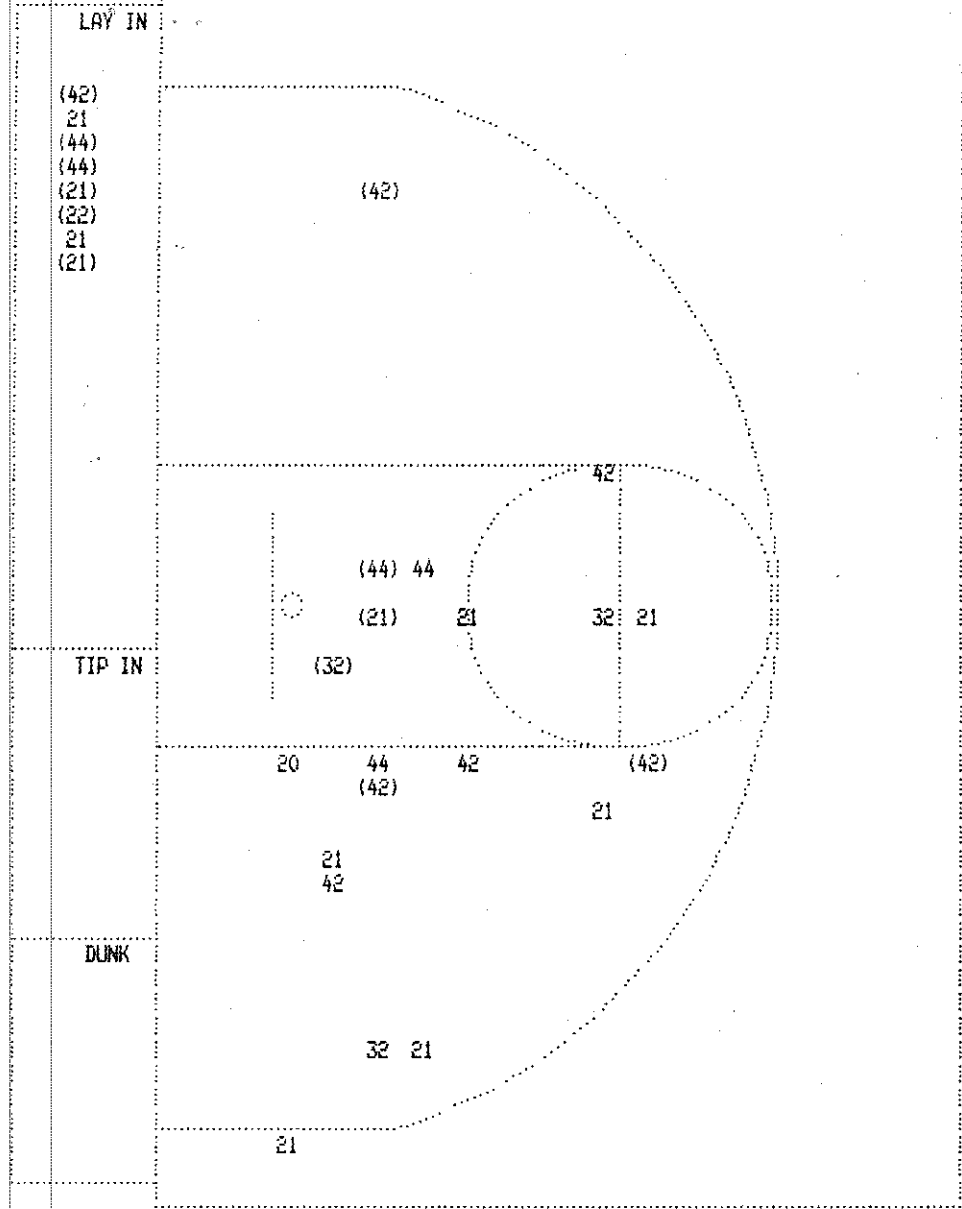
Clay County "Tigers" vs Rowan County "Vikings"
1st Half Play by Play

Tip off at 1:00 p.m. on 03/17/88 at State Tourney, Louisville
Produced by the K.H.S.A.A. Stat Crew with FINAL III™

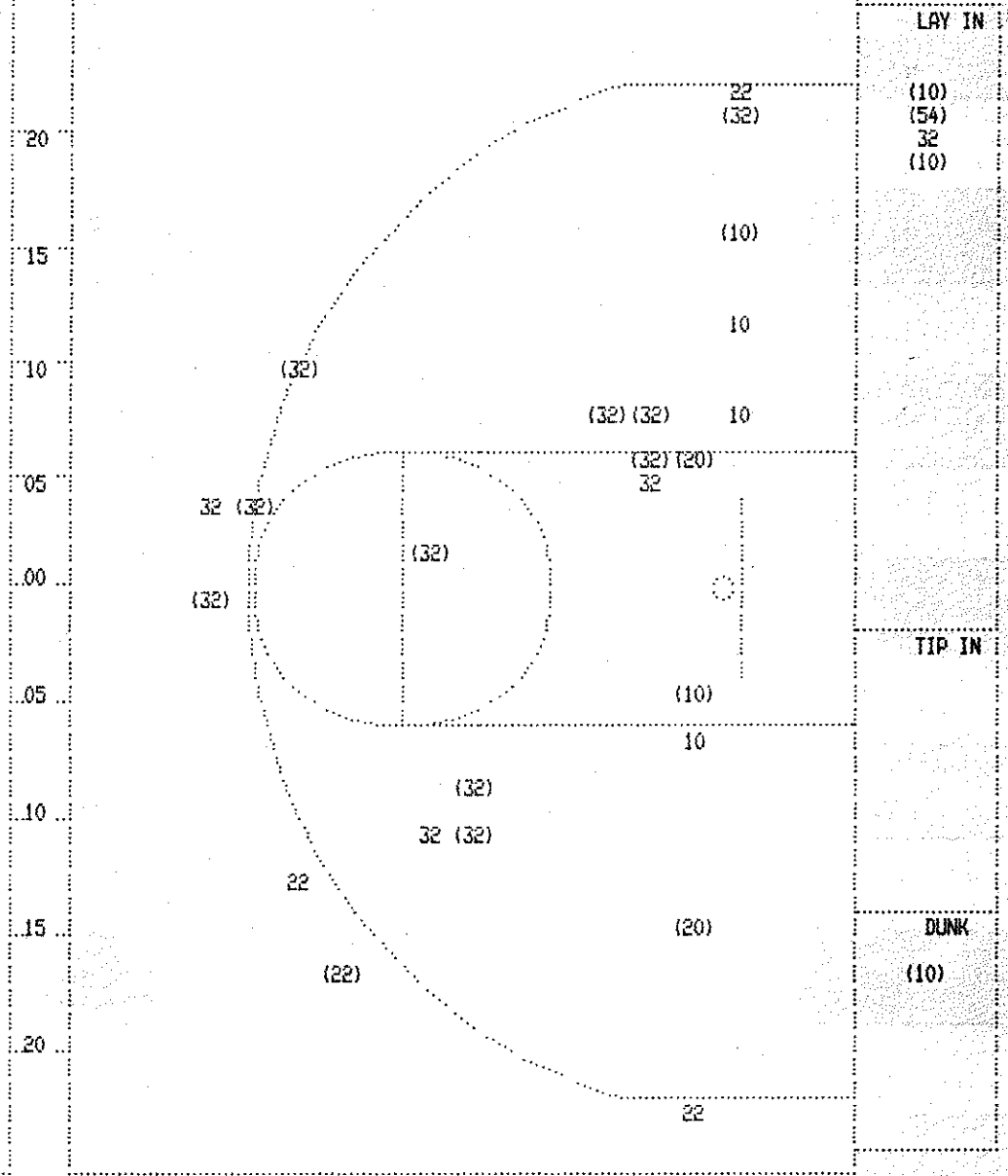
PAGE : 2

| Player | Team | Rowan County | Time | Score | Clay County | Player | Team |
|----------------------------|------|--|--------------------|-----------------|--|--------|-------------------|
| Wells, Kelly, Adkins, Greg | | Price, Mike, Blair, Jason, Morgan, Jeremy | | | Jackson, Kevin, Farmer, Russ, Rawlings, E., Chadwell, Russ, Farmer, Richie | | |
| 1-7 14.2% 8-18 44.4% | | Ball to Vikings Driving Layup by Wells, Kelly | 2 7:21 | *19-24 | | | |
| 2 | 4 | Assist by Moore, Ron | 2 7:09 | | | | |
| 1-1 100% 9-19 47.3% | | Sub In: Moore, Ron Out: Morgan, Jeremy Layup Off Fast Break by Blair, Jason | 2 6:59 | *21-24 | | | |
| | | | 2 6:46 | 21-26* | 16 ft Left Base Line Jump shot by Chadwell, Russ Assist by Farmer, Richie | 4-6 | 66.6% 11-19 57.8% |
| 1 | 3 | Player Control Foul on Adkins, Greg | 2 6:30 | | | 1 | 4 |
| 1 | 4 | Foul on Blair, Jason | 2 6:19 | | | | |
| | | | 2 6:15 | 21-28* | 14 ft Right Base Line Jump shot by Jackson, Kevin Assist by Jackson, Kevin | 2-2 | 100% 12-20 60.0% |
| | | | 2 5:36 | 21-31* | 3 pt 21 ft Left Angle Jump shot by Farmer, Richie Assist by Farmer, Russ | 6-9 | 66.6% 13-21 61.9% |
| | | | 2 5:11 | 21-34* | 3 pt 23 ft Right Angle Jump shot by Farmer, Russ Assist by Farmer, Richie | 1-4 | 25.0% 14-22 63.6% |
| | | | 2 5:10 | | | 2 | 7 |
| | | REB: 10 A: 4 BLK: 1 TO: 6 PF: 4 S: 1 FT: 3-4 75.0% FG: 9-19 47.3% | No. 1 Rowan County | T I M E - D U T | REB: 9 A: 7 BLK: 0 TO: 1 PF: 3 S: 2 FT: 2-2 100% FG: 14-22 63.6% | | |
| | | Sub In: Morgan, Jeremy Out: Wells, Kelly | 2 5:09 | | | | |
| | | | 2 4:27 | 21-37* | 3 pt 22 ft Left Base Line Jump shot by Farmer, Richie Assist by Farmer, Russ | 7-10 | 70.0% 15-23 65.2% |
| | | | 2 4:12 | | Foul on Farmer, Russ | 3 | 8 |
| | | Sub In: Wells, Kelly Out: Moore, Ron | 2 4:12 | | | 1 | 4 |
| | | | 2 3:50 | 21-39* | 12 ft Lane Jump shot by Farmer, Richie | 8-11 | 72.7% 16-24 66.6% |
| | | | 2 3:19 | 21-41* | Layup Off Fast Break by Chadwell, Russ Assist by Farmer, Russ | 5-7 | 71.4% 17-25 68.0% |
| | | | 2 3:17 | | | 4 | 9 |
| | | REB: 11 A: 4 BLK: 1 TO: 8 PF: 4 S: 1 FT: 3-4 75.0% FG: 9-21 42.8% | No. 2 Rowan County | T I M E - D U T | REB: 10 A: 9 BLK: 0 TO: 1 PF: 4 S: 2 FT: 2-2 100% FG: 17-25 68.0% | | |
| 2-9 22.2% 10-23 43.4% | | Follow Layup by Wells, Kelly | 2 3:01 | *23-41 | | | |
| 4-7 57.1% 11-25 44.0% | | 6 ft Left Side Bank by Adkins, Greg | 2 2:40 | 23-43* | 8 ft Left Side Bank by Farmer, Richie | 9-12 | 75.0% 18-26 69.2% |
| | | Sub In: Trent, T. J. Out: Price, Mike | 2 2:29 | *25-43 | | | |
| 3-11 27.2% 12-27 44.4% | | 2 ft Lane Jump shot by Wells, Kelly | 2 2:20 | | | | |
| 2 | 5 | Foul on Wells, Kelly | 2 2:02 | *27-43 | | | |
| | | | 2 1:49 | | | | |
| | | | 2 1:49 | 27-44* | Jackson, Kevin, 2 Free Throws made 1st missed 2nd Foul on Rawlings, E. | 3-4 | 75.0% 3-4 75.0% |
| | | | 2 0:49 | | | 2 | 5 |
| 2-2 100% 5-6 83.3% | | Trent, T. J., 1 & Bonus made both Sub In: Price, Mike Out: Wells, Kelly | 2 0:49 | *29-44 | | | |
| | | | 2 0:49 | | | | |
| | | | 2 0:03 | 29-46* | 13 ft Right Angle Jump shot by Farmer, Richie | 10-14 | 71.4% 19-29 65.5% |

| Player | Team | Rowan County | Time | Score | Clay County | Player | Team |
|---|------|---|--------|--------|--|--------|-------|
| Wells, Kelly, Adkins, Greg, Price, Mike, Blair, Jason, Morgan, Jeremy | | | | | Jackson, Kevin, Farmer, Russ, Rawlings, E., Chadwell, Russ, Farmer, Richie | | |
| | | | 1 7:50 | 0-2* | Ball to Tigers | | |
| | | | 1 7:12 | 0-4* | 14 ft Right Angle Jump shot by Farmer, Richie | 1-2 | 50.0% |
| | | | 1 6:54 | *2-4 | 9 ft Left Side Bank by Farmer, Richie | 2-3 | 66.6% |
| 1-1 100% 1-3 33.3% | | Follow Layup by Adkins, Greg | 1 6:44 | 2-6* | 6 ft Left Side Jump shot by Farmer, Richie | 3-4 | 75.0% |
| 2-2 100% 2-4 50.0% | | 15 ft Left Angle Jump shot by Adkins, Greg | 1 6:31 | *4-6 | | | |
| | | | 1 6:22 | 4-8* | Driving Layup by Chadwell, Russ | 1-1 | 100% |
| | | | 1 6:01 | | Foul on Farmer, Richie | | |
| 1-2 50.0% | 1-2 | 50.0% | 1 6:01 | *5-8 | | | |
| | | Morgan, Jeremy, 2 Free Throws made 1st missed 2nd | 1 5:47 | 5-10* | 6 ft Left Base Line Bank by Jackson, Kevin | 1-1 | 100% |
| 1-1 100% | 3-8 | 37.5% | 1 5:31 | *7-10 | | | |
| | | 2 ft Lane Follow by Morgan, Jeremy | 1 5:21 | 7-12* | 4 ft Lane Driving by Chadwell, Russ | 2-2 | 100% |
| 3-3 100% | 4-9 | 44.4% | 1 5:02 | *9-12 | | | |
| | | 18 ft Right Side Jump shot by Adkins, Greg | | | | | |
| | | 1 Assist by Blair, Jason | | | | | |
| 1-1 100% | 5-11 | 45.4% | 1 4:53 | 9-14* | Layup Off Fast Break by Rawlings, E. | 1-1 | 100% |
| | | Turnaround Layup by Price, Mike | | | 1 Assist by Chadwell, Russ | | |
| | | 1 Assist by Morgan, Jeremy | 1 4:05 | *11-14 | | | |
| 2-2 100% | 6-13 | 46.1% | 1 3:43 | 11-17* | 3 pt 22 ft Straight Away Jump shot by | | |
| | | Driving Reverse Lay Up by Price, Mike | | | Farmer, Richie | | |
| | | 1 Foul on Price, Mike | 1 3:08 | | Foul on Jackson, Kevin | 4-5 | 80.0% |
| | | Sub In: Moore, Ron Out: Morgan, Jeremy | 1 2:25 | *13-17 | | | |
| | | | 1 2:11 | | | | |
| | | | 1 2:11 | | | | |
| | | | 1 2:11 | 13-19* | Jackson, Kevin, 2 Free Throws made both | 2-2 | 100% |
| | | | 1 1:46 | 13-21* | Dunk Off Fast Break by Chadwell, Russ | 3-4 | 75.0% |
| | | | | | 1 Assist by Farmer, Russ | | |
| | | | 1 1:31 | | Foul on Rawlings, E. | | |
| 2-2 100% | 3-4 | 75.0% | 1 1:31 | *15-21 | | | |
| | | Moore, Ron, 2 Free Throws made both | 1 1:17 | 15-24* | 3 pt 20 ft Circle Jump shot by Farmer, Richie | 5-7 | 71.4% |
| | | | | | 1 Assist by Chadwell, Russ | | |
| | | | 1 0:55 | | | | |
| 3-3 100% | 7-16 | 43.7% | 1 0:26 | *17-24 | | | |
| | | 1 Player Control Foul on Wells, Kelly | | | | | |
| | | 3 ft Lane Jump shot by Price, Mike | | | | | |
| | | 1 Assist by Moore, Ron | | | | | |



| Rowan County | | | | | |
|-----------------|--------|----------|-----------------|------------|---------|
| Player | | | Player | | Player |
| 21 - Wells, Kel | 3/11 | 27.2% | 20 - Moore, Ron | 0/1 | 0.0% |
| 42 - Adkins, Gr | 4/7 | 57.1% | | | |
| 44 - Price, Mik | 3/5 | 60.0% | | | |
| 22 - Blair, Jas | 1/1 | 100.0% | | | |
| 32 - Morgan, Je | 1/3 | 33.3% | | | |
| Layups | 1-9 Ft | 10-15 Ft | Over 15 Ft | 3 Pointers | Total |
| 6 / 8 | 4 / 9 | 1 / 7 | 1 / 3 | 0 / 1 | 12 / 28 |
| 75.0% | 44.4% | 14.3% | 33.3% | 0.0% | 42.9% |



| Clay County | | | | | |
|-----------------|--------|----------|------------|------------|---------|
| Player | | | Player | | Player |
| 20 - Jackson, K | 2/2 | 100.0% | | | |
| 22 - Farmer, Ru | 1/4 | 25.0% | | | |
| 54 - Rawlings, | 1/1 | 100.0% | | | |
| 10 - Chadwell, | 5/8 | 62.5% | | | |
| 32 - Farmer, Ri | 10/14 | 71.4% | | | |
| Layups | 1-9 Ft | 10-15 Ft | Over 15 Ft | 3 Pointers | Total |
| 4 / 5 | 5 / 8 | 4 / 5 | 1 / 2 | 5 / 9 | 19 / 29 |
| 80.0% | 62.5% | 80.0% | 50.0% | 55.6% | 65.5% |